

GAULT ORIGINAL

MINIATURE ARCHITECTURE IN CERAMIC



Gault Original

Gault Original are miniature ceramic houses made in France starting in the early 1980's. Jean-Pierre Gault is the artist who started it all and became a successful business through the investment and leadership of his brother Dominique. Collectors from around the world cherish the Gault Original houses.

Did You Know?

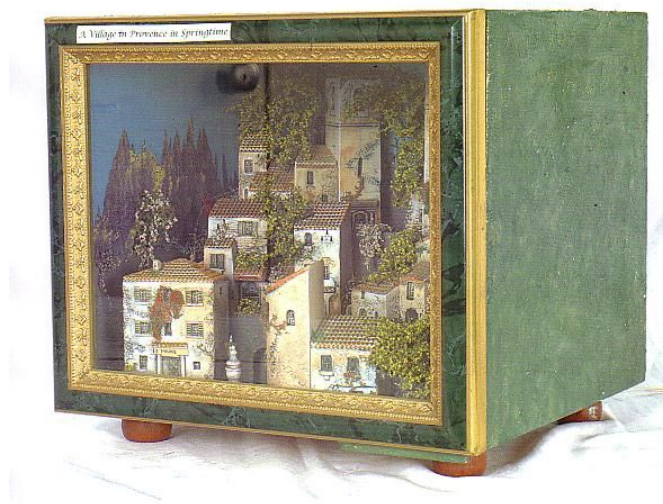
To this day and since the very beginning of the Gault Original houses in the early 1980's, there has never been other creators of ceramic houses depicting the various cities or regions.



Shadow Box Display Inspiration

In last quarter's newsletter we shared some display tips to showcase your Gault houses collection. Continuing on this topic, this newsletter's focus is on the inspiration of using a shadow box to display your Gault houses scene.

A shadow box is simply a box with depth to display dimensional objects or a diorama. Here is an example of a shadow box featuring Gault Provence houses:



Shadow boxes can be found commercially or built typically using a wooden box with a picture frame covering the opening. Using a glass or plexiglass provides the benefits of keeping the pieces safe from reach and dust-free.

Deeper shadow boxes are often equipped with concealed lighting inside the box to allow for better viewing.

Visit our online shop at: <https://gault-france.com/shop/>